

# KKL1X240TM

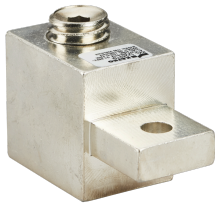
## Cable Connectors

- Sales unit = 1 pc
- Suitable for Al/Cu cables
- Material: tin-coated aluminium
- IEC 61238-1 Class A
- Environmentally friendly materials

**Conductors per cross section (mm<sup>2</sup>) table**  
>>

**KKL Installation Instructions** >>

**Compatibility tables** >>



Data subject to change without notice. Always confirm the data is correct from the seller.

## Product details

<b>SKU</b>	KKL1X240TM
<b>Al mm<sup>2</sup></b>	35-240
<b>Color</b>	Standard
<b>Cu mm<sup>2</sup></b>	35-240
<b>E-Number</b>	1942104
<b>EAN</b>	6419410378656
<b>In (Al) (A)</b>	400
<b>In (Cu) (A)</b>	425
<b>Key size</b>	Hex 8
<b>Mounting</b>	Bolt M8
<b>Number of Conductors</b>	1
<b>Package size</b>	20
<b>Torque Al/Cu (Nm)</b>	25 (35-120 mm <sup>2</sup> ) / 40 (150-240 mm <sup>2</sup> )
<b>Un (V)</b>	690
<b>Weight (lb/kg)</b>	0.249 / 0.113

## Dimensional drawing

